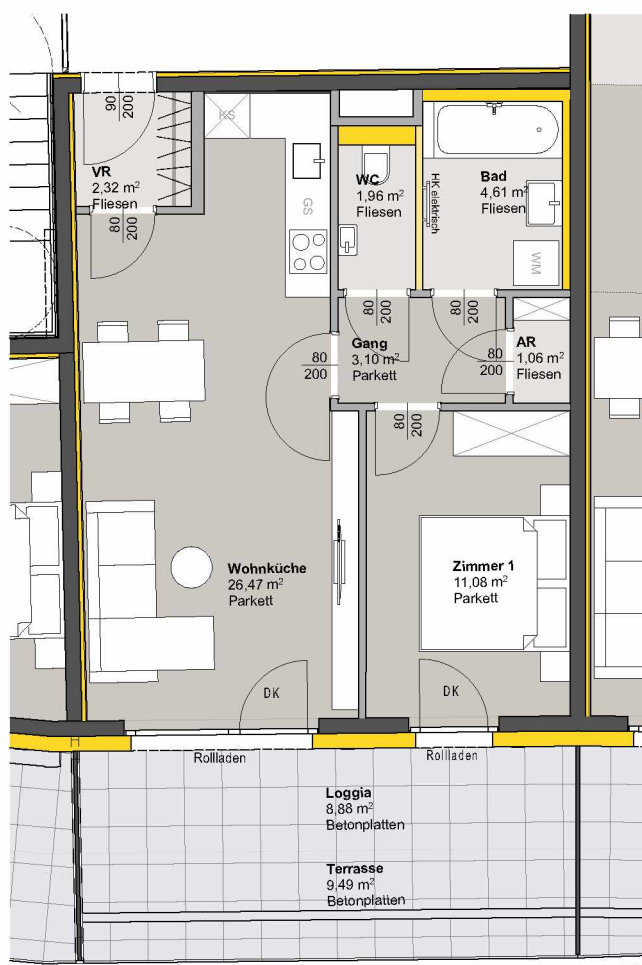
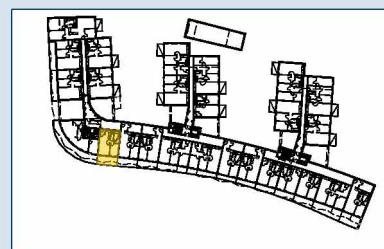


# TOP 102 - STG 1



## 1. OBERGESCHOSS

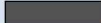
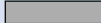



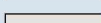
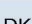

Raumbezeichnung	Wohnnutzfläche
AR	1,06 m²
Gang	3,10 m²
VR	2,32 m²
Wohnküche	26,47 m²
Zimmer 1	11,08 m²
Bad	4,61 m²
WC	1,96 m²
<b>Wohnnutzfläche</b>	<b>50,60 m²</b>

Loggia	8,88 m²
Terrasse	9,49 m²

KA	4,16 m²
----	---------

Anzahl PKW-STPL TOP 102	1
-------------------------	---



-  MASSIVBAU
-  LEICHTBAU
-  INSTALLATIONSFREIE WAND  
ANPASSBARER WOHNBAU
-  DÄMMUNG/VORSATZSCHALE
-  PARKETT
-  FLIESEN
-  BETONPLATTEN
-  DK Dreh-Kipp Flügel
-  Frostsichere Außenarmatur

Hinweis: PKW-STPL in Tiefgarage

