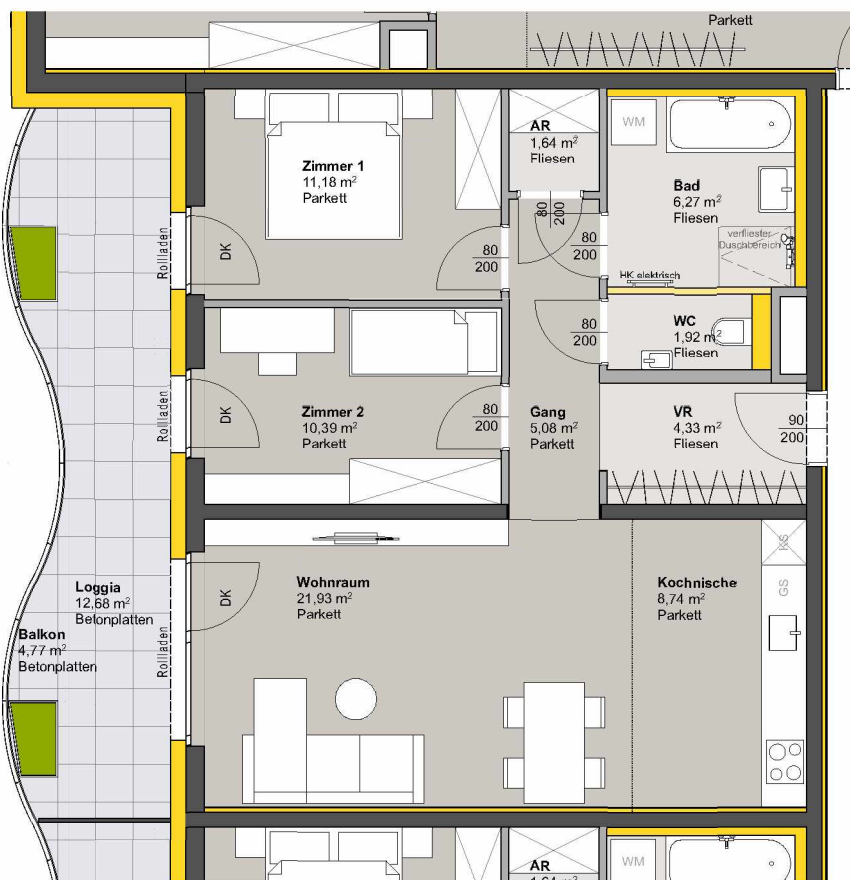


# TOP 115 - STG 1



## 2. OBERGESCHOSS

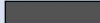
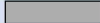





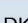

Raumbezeichnung	Wohnnutzfläche
AR	1,64 m <sup>2</sup>
Gang	5,08 m <sup>2</sup>
Kochnische	8,74 m <sup>2</sup>
VR	4,33 m <sup>2</sup>
Wohnraum	21,93 m <sup>2</sup>
Zimmer 1	11,18 m <sup>2</sup>
Zimmer 2	10,39 m <sup>2</sup>
Bad	6,27 m <sup>2</sup>
WC	1,92 m <sup>2</sup>
<b>Wohnnutzfläche</b>	<b>71,48 m<sup>2</sup></b>

Balkon	4,77 m <sup>2</sup>
Loggia	12,68 m <sup>2</sup>

KA	4,80 m <sup>2</sup>
----	---------------------

Anzahl PKW-STPL TOP 115 1



	MASSIVBAU
	LEICHTBAU
	INSTALLATIONSFREIE WAND ANPASSBARER WOHNBAU
	DÄMMUNG/VORSATZSCHALE
	PARKETT
	FLIESEN
	BETONPLATTEN
	DK Dreh-Kipp Flügel
	Frostsichere Außenarmatur

Hinweis: PKW-STPL in Tiefgarage

