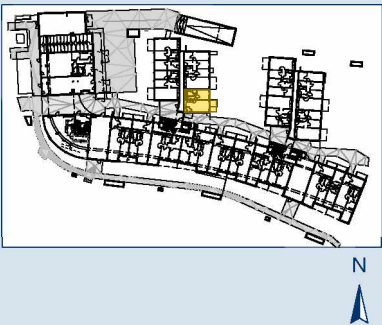
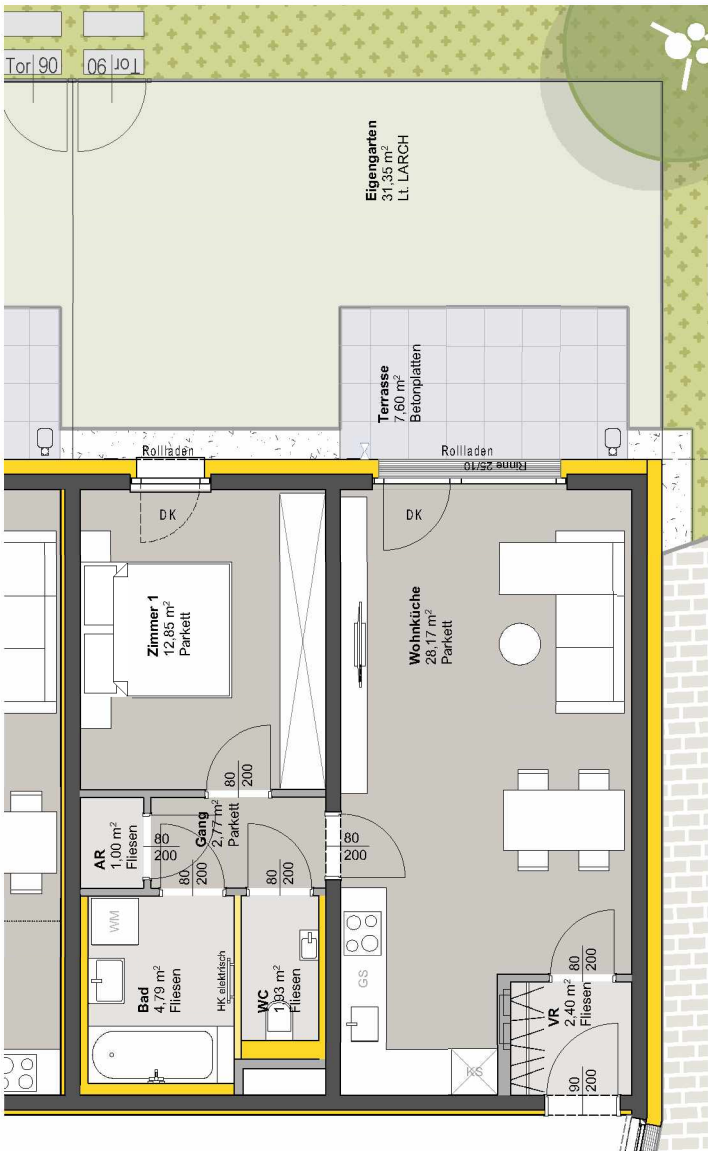
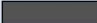
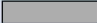


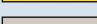


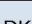



# TOP 206 - STG 2



ERDGESCHOSS	
Raumbezeichnung	Wohnnutzfläche
AR	1,00 m²
Gang	2,77 m²
VR	2,40 m²
Wohnküche	28,17 m²
Zimmer 1	12,85 m²
Bad	4,79 m²
WC	1,93 m²
<b>Wohnnutzfläche</b>	<b>53,91 m²</b>
Eigengarten	31,35 m²
Terrasse	7,60 m²
KA	4,60 m²
Anzahl PKW-STPL TOP 206	1



	MASSIVBAU
	LEICHTBAU
	INSTALLATIONSFREIE WAND ANPASSBARER WOHNBAU
	DÄMMUNG/VORSATZSCHALE
	PARKETT
	FLIESEN
	BETONPLATTEN
	DK Dreh-Kipp Flügel
	Frostsichere Außenarmatur
Hinweis: PKW-STPL in Tiefgarage	
