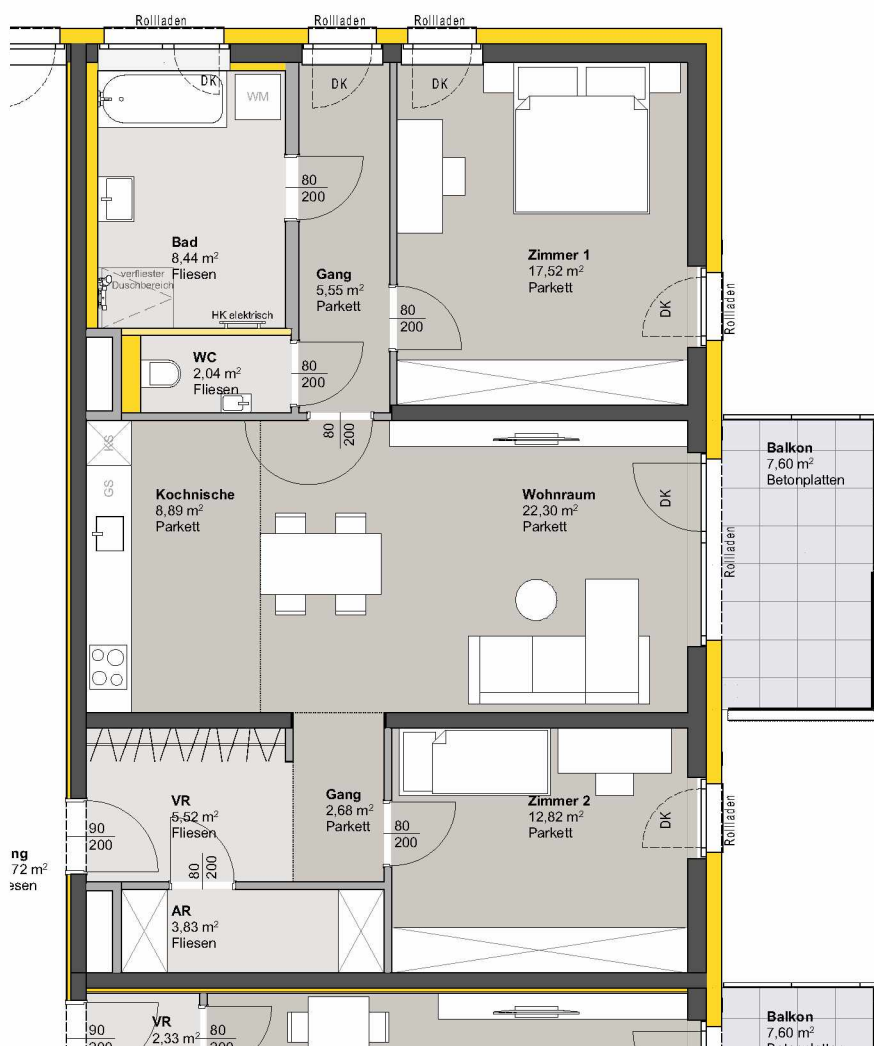
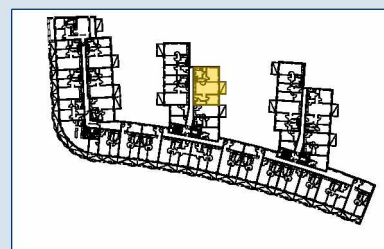


# TOP 231 - STG 2



## 3. OBERGESCHOSS

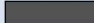
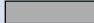



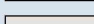
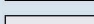
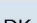

Raumbezeichnung	Wohnnutzfläche
AR	3,83 m <sup>2</sup>
Gang	2,68 m <sup>2</sup>
Gang	5,55 m <sup>2</sup>
Kochnische	8,89 m <sup>2</sup>
VR	5,52 m <sup>2</sup>
Wohnraum	22,30 m <sup>2</sup>
Zimmer 1	17,52 m <sup>2</sup>
Zimmer 2	12,82 m <sup>2</sup>
Bad	8,44 m <sup>2</sup>
WC	2,04 m <sup>2</sup>
<b>Wohnnutzfläche</b>	<b>89,59 m<sup>2</sup></b>

Balkon 7,60 m<sup>2</sup>

KA 4,40 m<sup>2</sup>

Anzahl PKW-STPL TOP 231 2



-  MASSIVBAU
-  LEICHTBAU
-  INSTALLATIONSFREIE WAND  
ANPASSBARER WOHNBAU
-  DÄMMUNG/VORSATZSCHALE
-  PARKETT
-  FLIESEN
-  BETONPLATTEN
-  DK Dreh-Kipp Flügel
-  Frostsichere Außenarmatur

Hinweis: PKW-STPL in Tiefgarage

