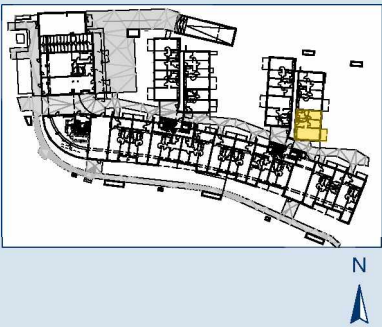
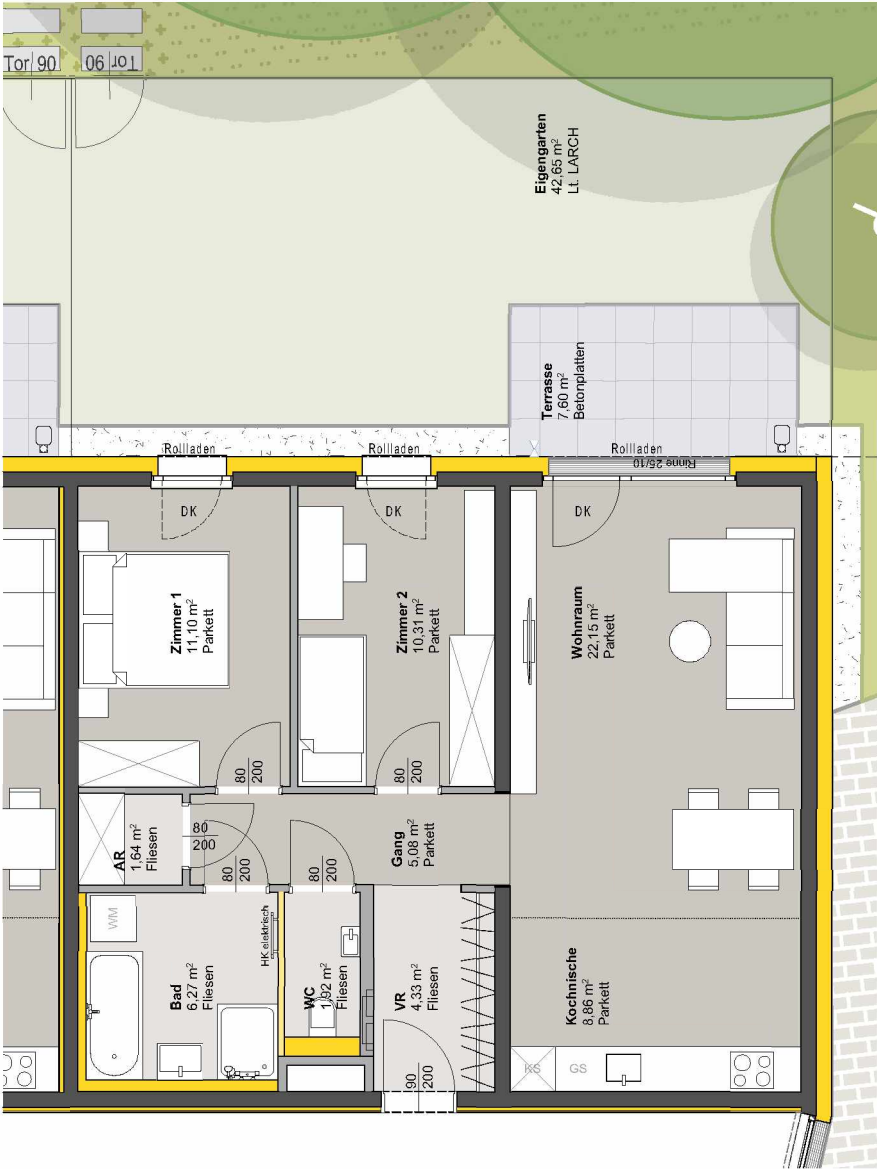
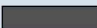
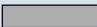



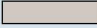
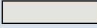
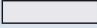
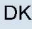



TOP 306 - STG 3



ERDGESCHOSS	
Raumbezeichnung	Wohnnutzfläche
AR	1,64 m²
Gang	5,08 m²
Kochnische	8,86 m²
VR	4,33 m²
Wohnraum	22,15 m²
Zimmer 1	11,10 m²
Zimmer 2	10,31 m²
Bad	6,27 m²
WC	1,92 m²
Wohnnutzfläche	71,66 m²
Eigengarten	42,65 m²
Terrasse	7,60 m²
KA	3,94 m²
Anzahl PKW-STPL TOP 306	1



	MASSIVBAU
	LEICHTBAU
	INSTALLATIONSFREIE WAND
	ANPASSBARER WOHNBAU
	DÄMMUNG/VORSATZSCHALE
	PARKETT
	FLIESEN
	BETONPLATTEN
	DK Dreh-Kipp Flügel
	Frostsichere Außenarmatur
Hinweis: PKW-STPL in Tiefgarage	
