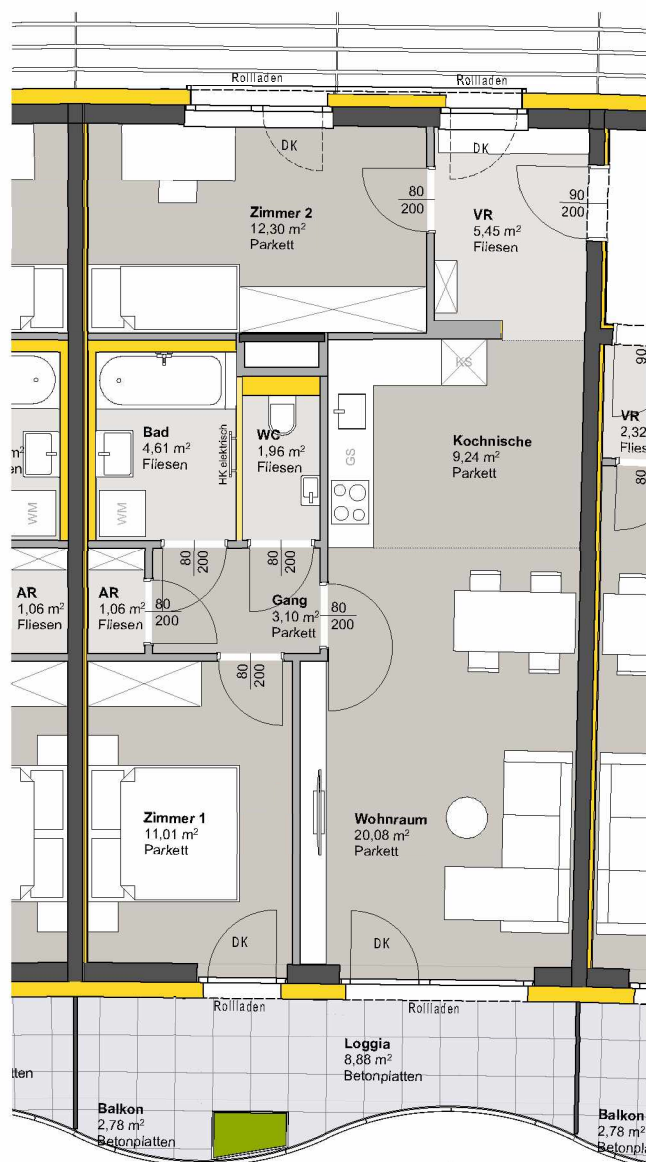
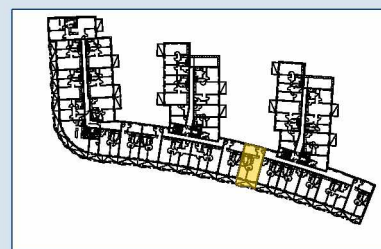


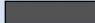
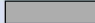



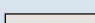

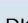

# TOP 320 - STG 3



## 2. OBERGESCHOSS

Raumbezeichnung	Wohnnutzfläche
AR	1,06 m <sup>2</sup>
Gang	3,10 m <sup>2</sup>
Kochnische	9,24 m <sup>2</sup>
VR	5,45 m <sup>2</sup>
Wohnraum	20,08 m <sup>2</sup>
Zimmer 1	11,01 m <sup>2</sup>
Zimmer 2	12,30 m <sup>2</sup>
Bad	4,61 m <sup>2</sup>
WC	1,96 m <sup>2</sup>
<b>Wohnnutzfläche</b>	<b>68,81 m<sup>2</sup></b>
Balkon	2,78 m <sup>2</sup>
Loggia	8,88 m <sup>2</sup>
KA	4,47 m <sup>2</sup>
STPL	12,50 m <sup>2</sup>
Anzahl PKW-STPL TOP 320	1



	MASSIVBAU
	LEICHTBAU
	INSTALLATIONSFREIE WAND ANPASSBARER WOHNBAU
	DÄMMUNG/VORSATZSCHALE
	PARKETT
	FLIESEN
	BETONPLATTEN
	Dreh-Kipp Flügel
	Frostsichere Außenarmatur

Hinweis: PKW-STPL in Tiefgarage

