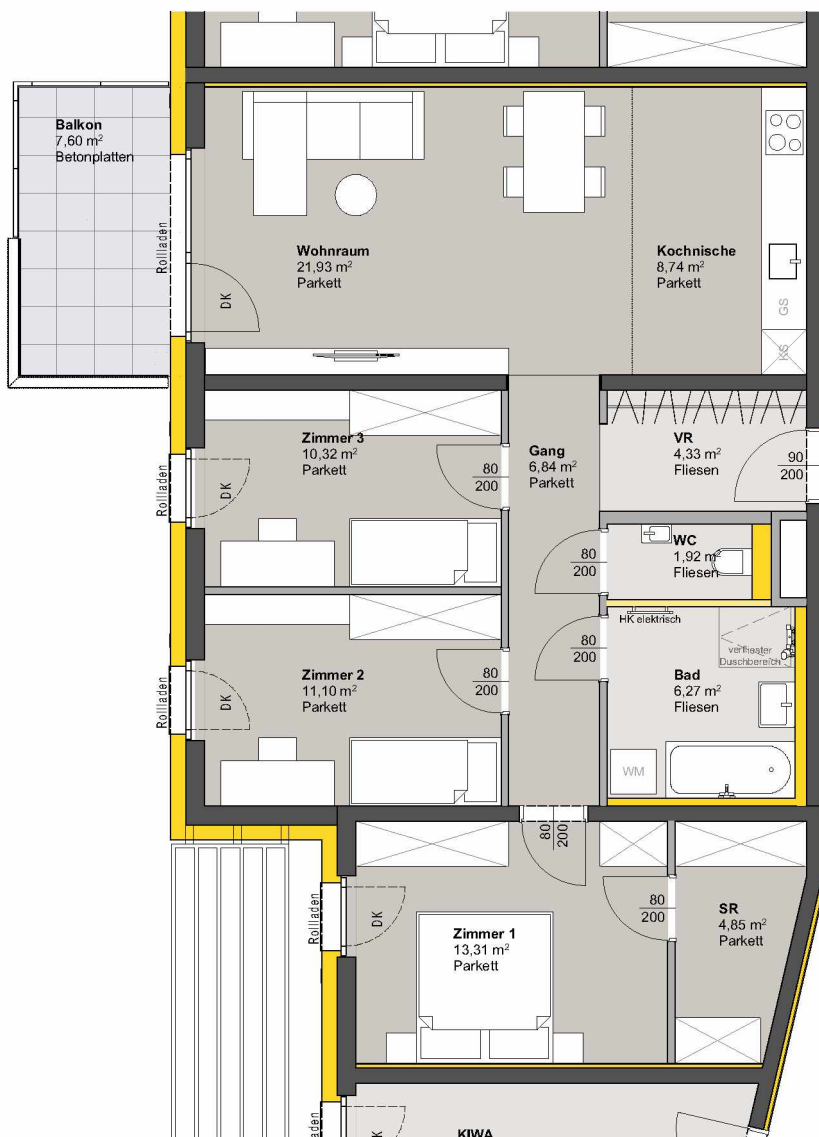
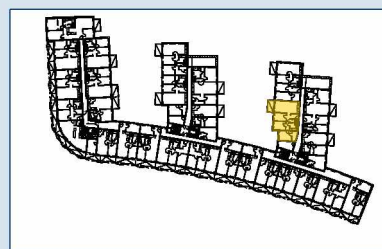


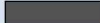
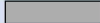



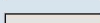



TOP 329 - STG 3



2. OBERGESCHOSS

Raumbezeichnung	Wohnnutzfläche
Gang	6,84 m ²
Kochnische	8,74 m ²
SR	4,85 m ²
VR	4,33 m ²
Wohnraum	21,93 m ²
Zimmer 1	13,31 m ²
Zimmer 2	11,10 m ²
Zimmer 3	10,32 m ²
Bad	6,27 m ²
WC	1,92 m ²
Wohnnutzfläche	89,61 m²
Balkon	7,60 m ²
KA	4,47 m ²
Anzahl PKW-STPL TOP 329	2



-  MASSIVBAU
-  LEICHTBAU
-  INSTALLATIONSFREIE WAND
ANPASSBARER WOHNBAU
-  DÄMMUNG/VORSATZSCHALE
-  PARKETT
-  FLIESEN
-  BETONPLATTEN
-  DK Dreh-Kipp Flügel
-  Frostsichere Außenarmatur

Hinweis: PKW-STPL in Tiefgarage

