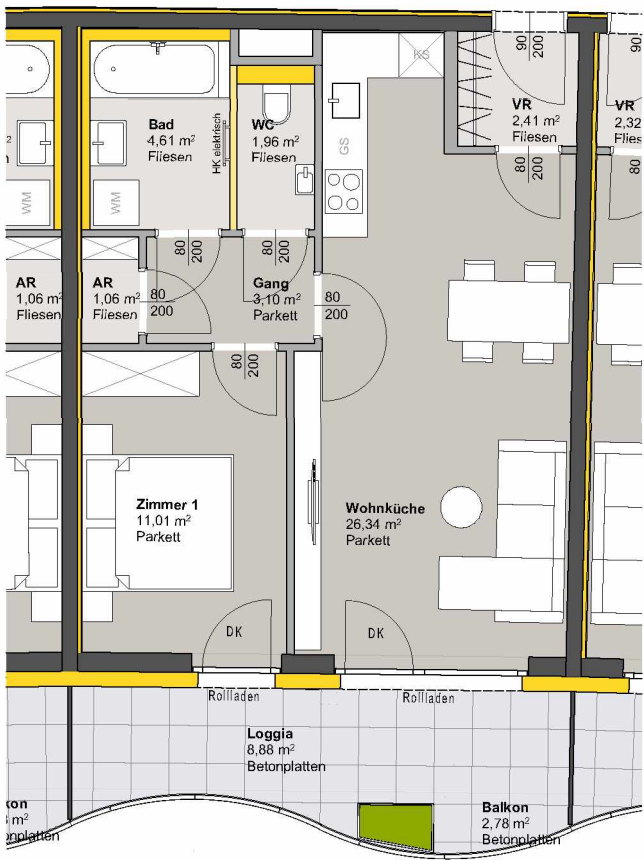
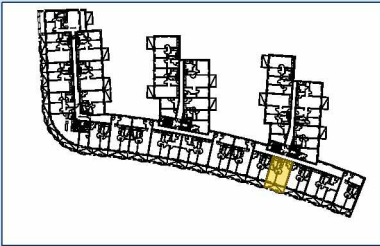


TOP 332 - STG 3



3. OBERGESCHOSS

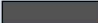
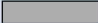



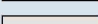
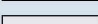
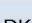

Raumbezeichnung	Wohnnutzfläche
AR	1,06 m ²
Gang	3,10 m ²
VR	2,41 m ²
Wohnküche	26,34 m ²
Zimmer 1	11,01 m ²
Bad	4,61 m ²
WC	1,96 m ²
Wohnnutzfläche	50,49 m²

Balkon	2,78 m ²
Loggia	8,88 m ²

KA	5,17 m ²
----	---------------------

Anzahl PKW-STPL TOP 332	1
-------------------------	---



-  MASSIVBAU
-  LEICHTBAU
-  INSTALLATIONSFREIE WAND
ANPASSBARER WOHNBAU
-  DÄMMUNG/VORSATZSCHALE
-  PARKETT
-  FLIESEN
-  BETONPLATTEN
-  DK Dreh-Kipp Flügel
-  Frostsichere Außenarmatur

Hinweis: PKW-STPL in Tiefgarage

