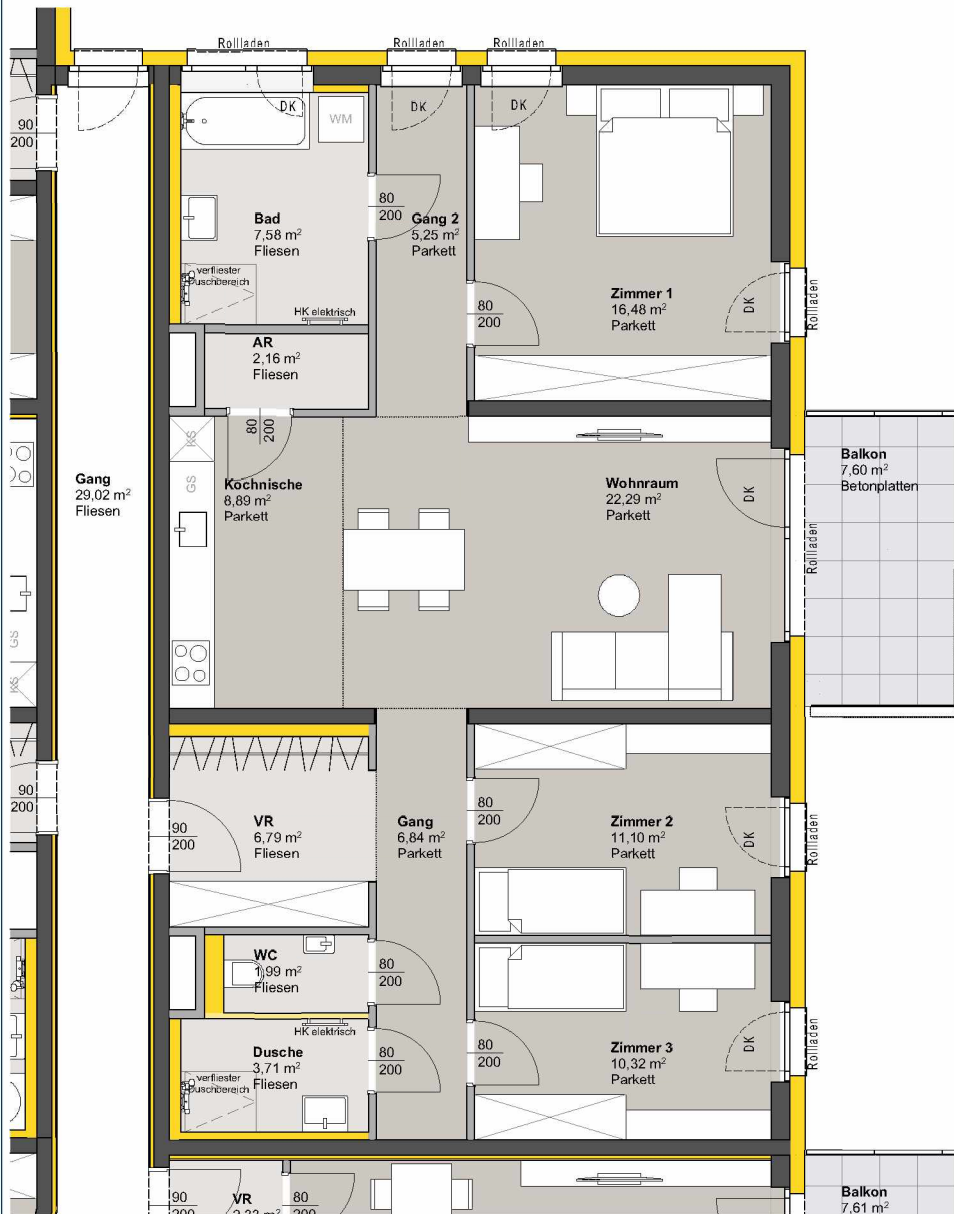
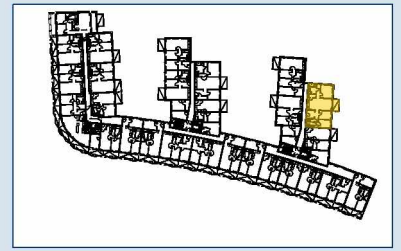


TOP 337 - STG 3

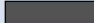
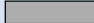



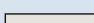





3. OBERGESCHOSS

Raumbezeichnung	Wohnnutzfläche
AR	2,16 m ²
Gang	6,84 m ²
Gang 2	5,25 m ²
Kochnische	8,89 m ²
VR	6,79 m ²
Wohnraum	22,29 m ²
Zimmer 1	16,48 m ²
Zimmer 2	11,10 m ²
Zimmer 3	10,32 m ²
Bad	7,58 m ²
Dusche	3,71 m ²
WC	1,99 m ²
Wohnnutzfläche	103,40 m²
Balkon	7,60 m ²
KA	6,44 m ²

Anzahl PKW-STPL TOP 337 2



	MASSIVBAU
	LEICHTBAU
	INSTALLATIONSFREIE WAND ANPASSBARER WOHNBAU
	DÄMMUNG/VORSATZSCHALE
	PARKETT
	FLIESEN
	BETONPLATTEN
	DK Dreh-Kipp Flügel
	Frostsichere Außenarmatur

Hinweis: PKW-STPL in Tiefgarage

