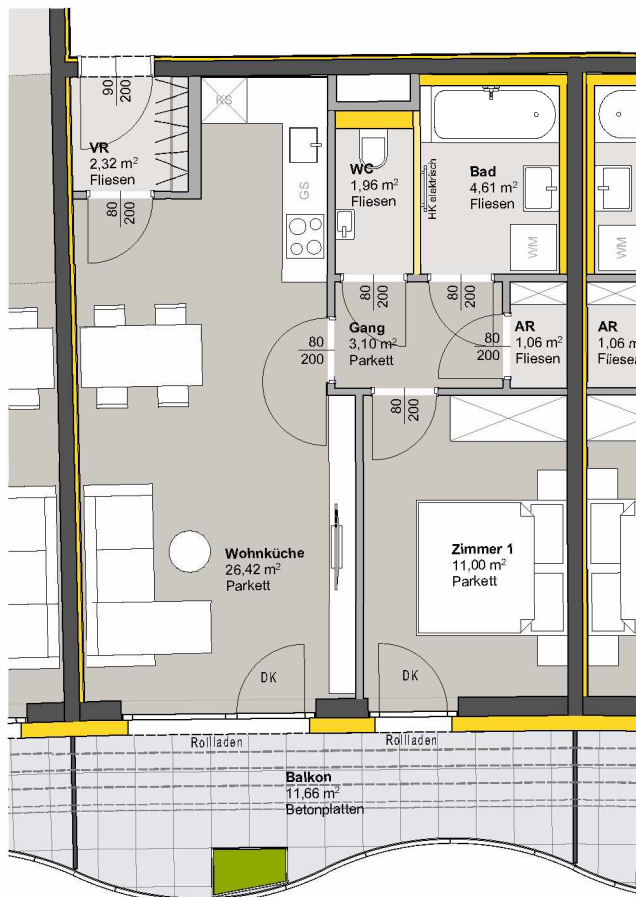


TOP 341 - STG 3



4. OBERGESCHOSS

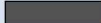
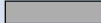



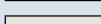
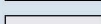
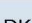

Raumbezeichnung	Wohnnutzfläche
AR	1,06 m ²
Gang	3,10 m ²
VR	2,32 m ²
Wohnküche	26,42 m ²
Zimmer 1	11,00 m ²
Bad	4,61 m ²
WC	1,96 m ²
Wohnnutzfläche	50,47 m²

Balkon 11,66 m²

KA 4,61 m²

Anzahl PKW-STPL TOP 341 1



-  MASSIVBAU
-  LEICHTBAU
-  INSTALLATIONSFREIE WAND
ANPASSBARER WOHNBAU
-  DÄMMUNG/VORSATZSCHALE
-  PARKETT
-  FLIESEN
-  BETONPLATTEN
-  DK Dreh-Kipp Flügel
-  Frostsichere Außenarmatur

Hinweis: PKW-STPL in Tiefgarage

