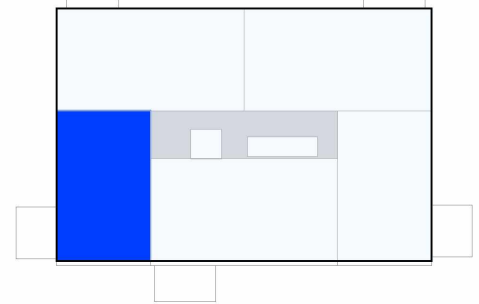
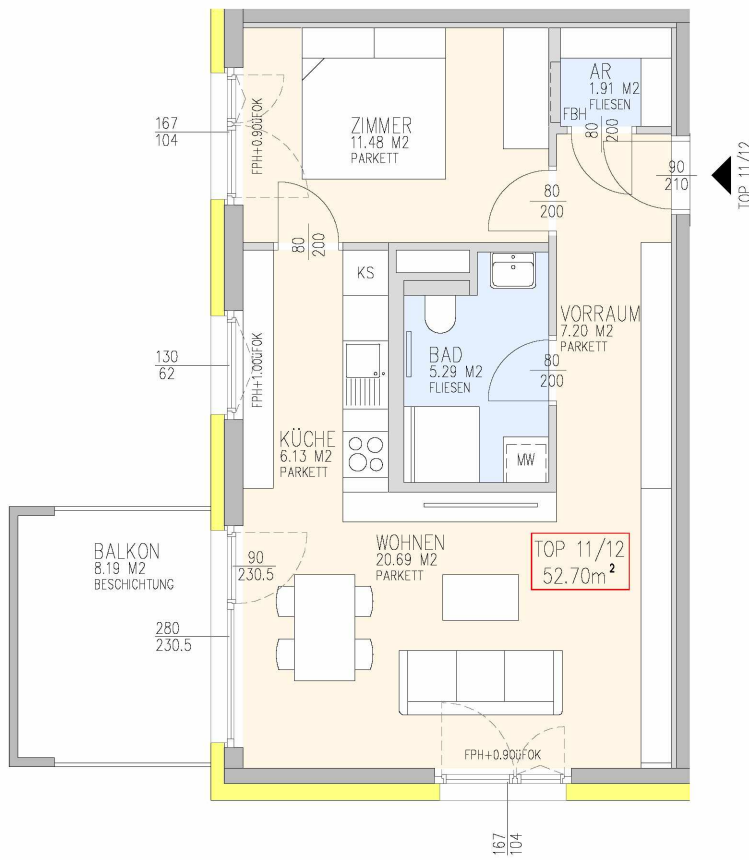
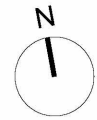


Übersicht OG2



Stiege 11



Parkett
 Fliesen
 Wärmedämmung
 Leichtbau
 Mauerwerk/Stahlbeton

TOP 11/12

STIEGE 11

OG 2

| | |
|-----------------------|-----------------|
| Vorraum | 7.20 M2 |
| Küche | 6.13 M2 |
| Wohnzimmer | 20.69 M2 |
| Zimmer | 11.48 M2 |
| AR | 1.91 M2 |
| Bad | 5.29 M2 |
| Wohnnutzfläche | 52.70 M2 |

| | |
|--------------------|-------------|
| Balkon | 8.19 M2 |
| Kellerabteil | 2.05 M2 |
| PKW-Stellplatz Nr. | 1 Stück 127 |

