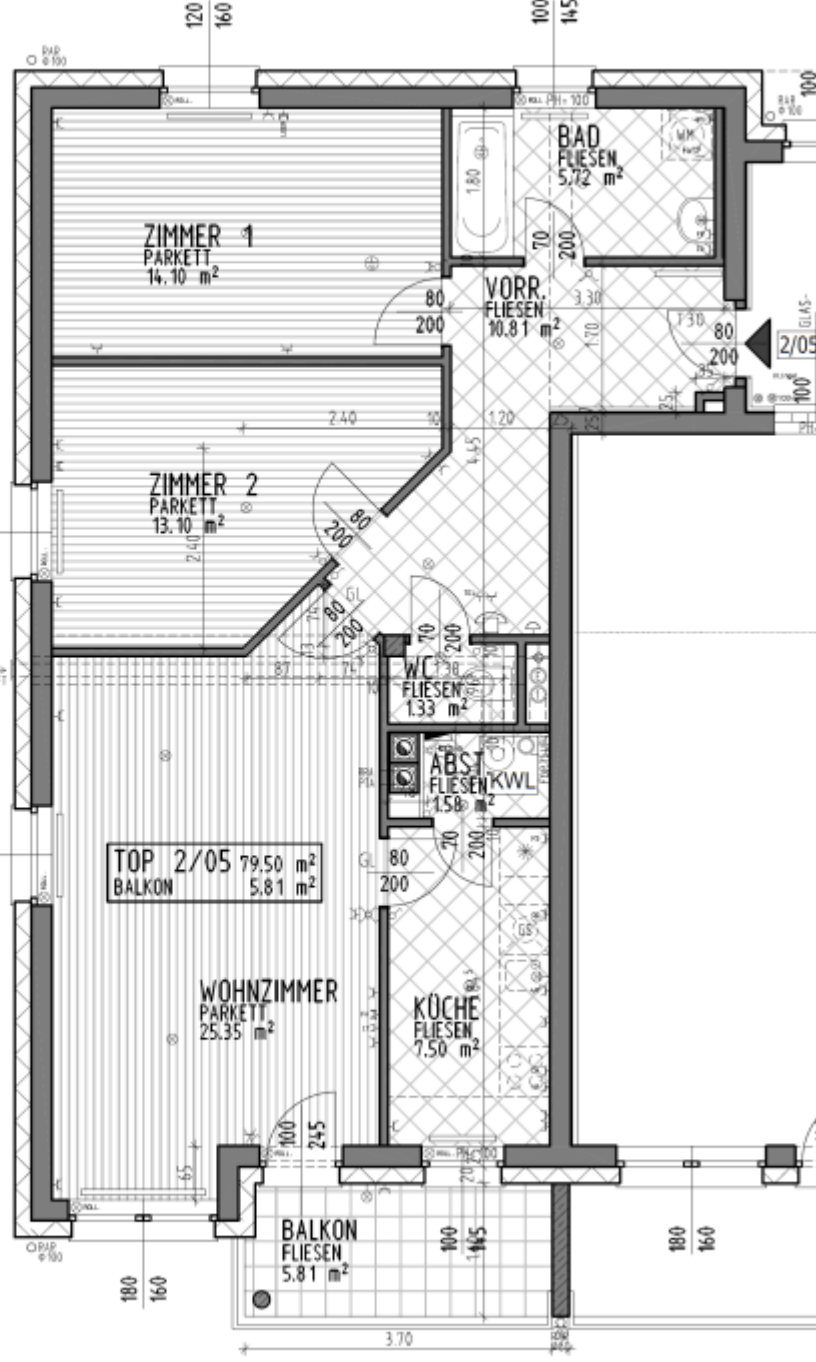


20,25 4,70 10 3,18 12,20
 2,35 4,15 2,50

25,20
 3,00
 5,55
 10
 3,10
 120
 160
 10
 3,90
 120
 160
 5,59
 0,97



±0.00 = 254.00



155 1,35 55 1,95 105 25
 20,25 2,00 1,95 1,95 25

