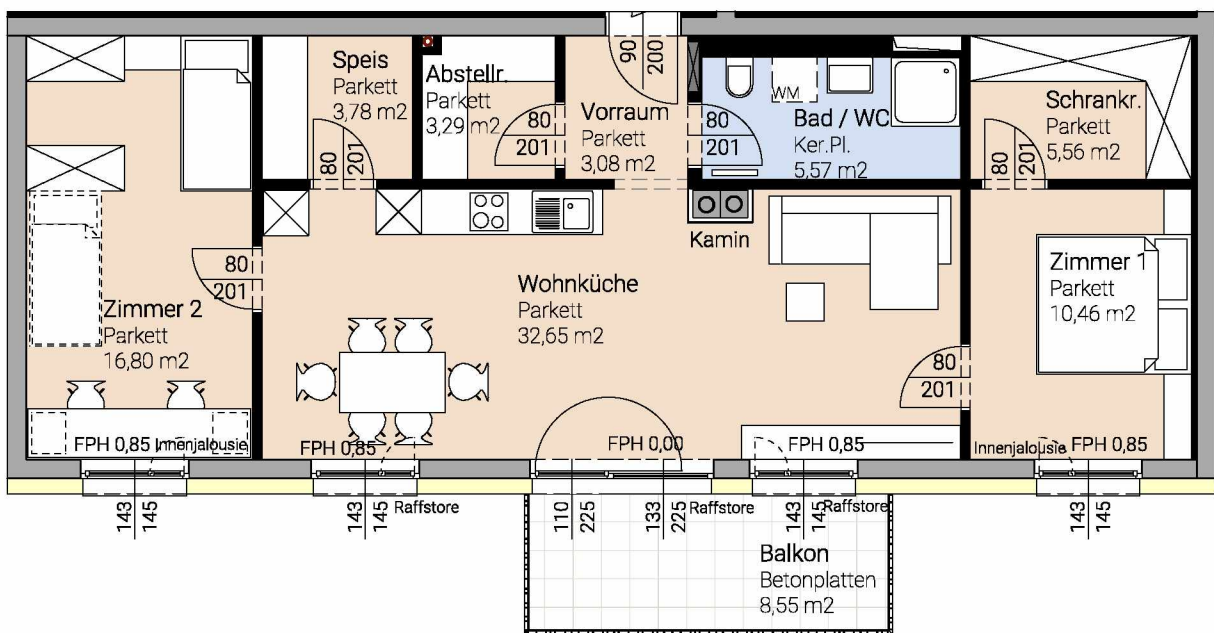
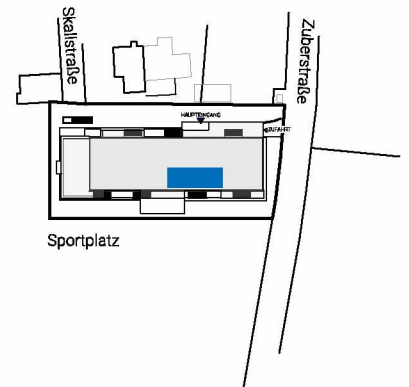
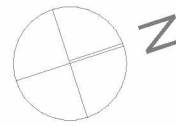








TOP 11



-  TROCKENBAU
-  STAHLBETON
-  ZIEGEL
-  DÄMMUNG
-  PARKETT
-  KERAMISCHE PLATTEN

TOP 11 - 4. OBERGESCHOSS

Raumbezeichnung	Wohnnutzfläche
Vorraum	3,08 m ²
Abstellraum	3,29 m ²
Wohnküche	32,65 m ²
Zimmer	16,80 m ²
Speis	3,78 m ²
Schrankraum	5,56 m ²
Zimmer	10,46 m ²
Bad/WC	5,57 m ²
Wohnnutzfläche gesamt	81,19 m²

Balkon	8,55 m ²
PKW Abstellplatz	ja
Abstellraum (Keller)	3,52 m ²