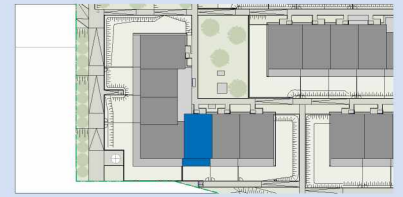
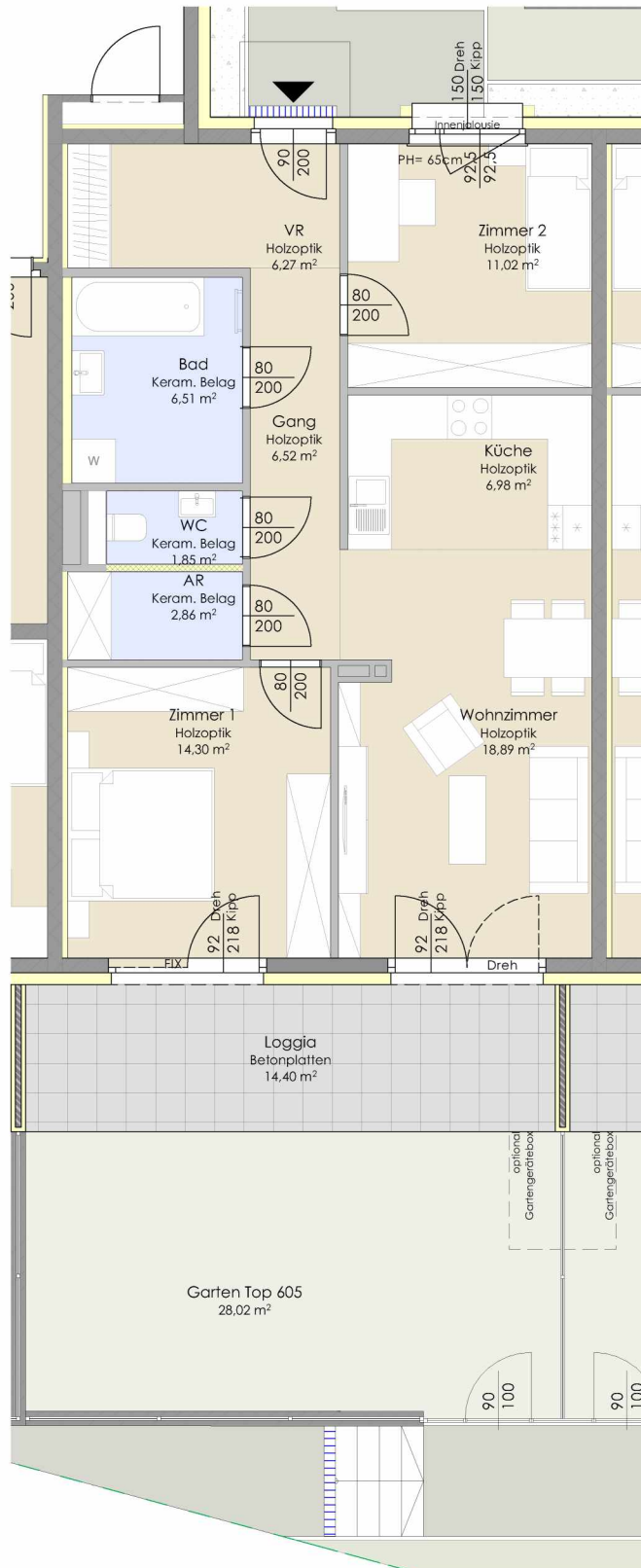
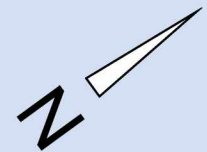


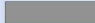
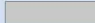

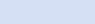
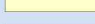
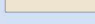
TOP 605 - STG 6



ERDGESCHOSS

Raumbezeichnung	Wohnnutzfläche
Vorraum	6,27 m ²
Gang	6,52 m ²
Bad	6,51 m ²
WC	1,85 m ²
Abstellraum	2,86 m ²
Küche	6,98 m ²
Wohnzimmer	18,89 m ²
Zimmer 1	14,30 m ²
Zimmer 2	11,02 m ²
Wohnnutzfläche	75,20 m²
Loggia	14,40 m ²
Abstellraum extern (AR 605)	4,23 m ²
Garten Top 605	28,02 m ²



	MASSIVBAU
	LEICHTBAU
	INSTALLATIONSWAND ANPASSBARER WOHNBAU
	DÄMMUNG/VORSATZSCHALE
	HOLZAPTIK BELAG
	KERAMISCHER BELAG

