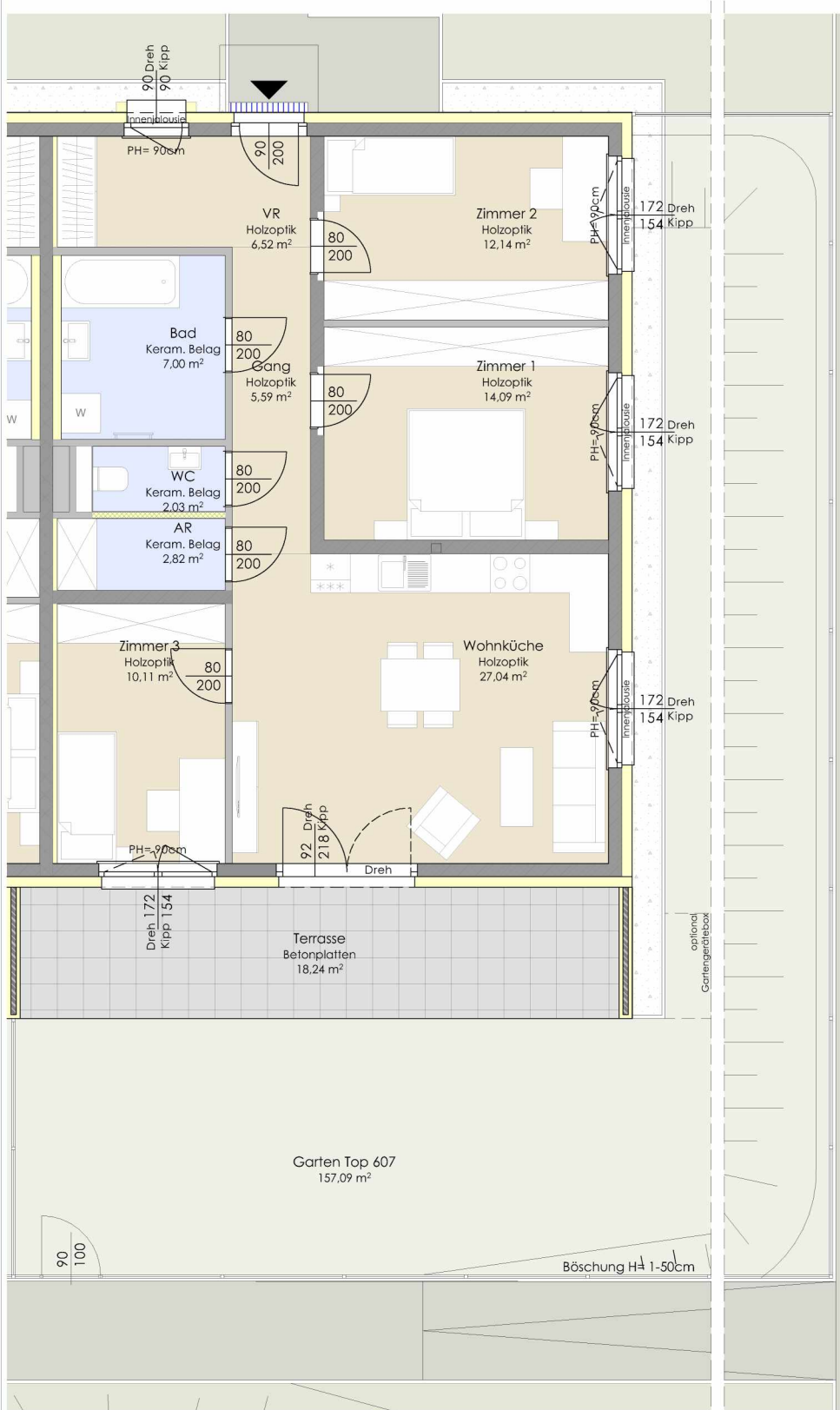
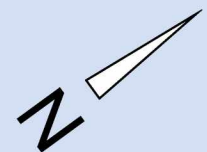


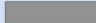
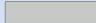

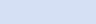
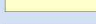
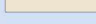
TOP 607 - STG 6



ERDGESCHOSS

Raumbezeichnung	Wohnnutzfläche
Vorraum	6,52 m ²
Gang	5,59 m ²
Bad	7,00 m ²
WC	2,03 m ²
Abstellraum	2,82 m ²
Wohnküche	27,04 m ²
Zimmer 1	14,09 m ²
Zimmer 2	12,14 m ²
Zimmer 3	10,11 m ²
Wohnnutzfläche	87,34 m²
Terrasse	18,24 m ²
Abstellraum extern (AR 607)	4,23 m ²
Garten Top 607	157,09 m ²



-  MASSIVBAU
-  LEICHTBAU
-  INSTALLATIONSWAND
ANPASSBARER WOHNBAU
-  DÄMMUNG/VORSATZSCHALE
-  HOLZAPTIK BELAG
-  KERAMISCHER BELAG

